

RETINA 360 WORKBOOK



IN FOCUS: DIABETIC EYE DISEASE CLINICAL PEARLS

Patient Priority: Working With Referring Providers

FACULTY



David Chin Yee, MD, FASRS
Partner, Georgia Retina
Atlanta, GA



OIlya Fromal, MD
The Retina Institute
St. Louis, MO

This activity is supported by an independent educational grant from Regeneron.

Patient Priority: Working With Referring Providers

David Chin Yee, MD, FASRS, and Ollya Fromal, MD

Watch Now: <https://evolvemeded.com/segment/29864/>

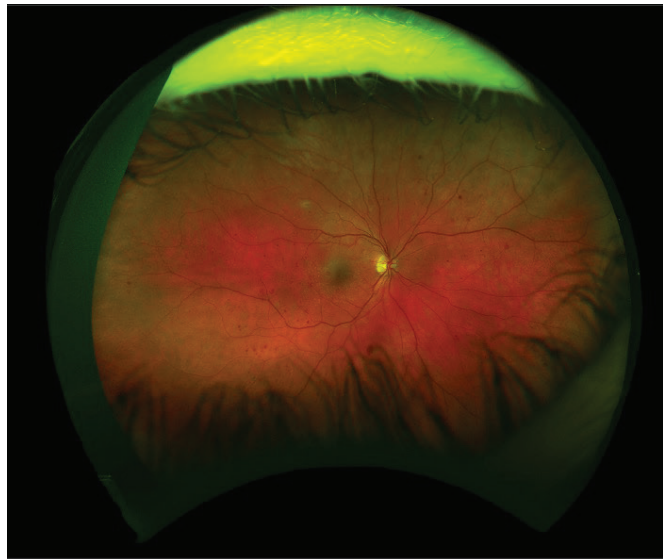
CASE HIGHLIGHTS

- Diabetic eye disease is often asymptomatic until it becomes advanced, highlighting the importance of routine eye examinations for diabetic patients.
- Effective communication and coordination between retina specialists and primary eye care providers is critical to ensure timely referrals of patients with diabetic retinopathy.
- Factors like the patient's level of disease awareness, disease severity, and comorbidities should guide the frequency of follow-up and treatment approach.
- Imaging technologies like wide-field fundus photography and fluorescein angiography can help identify diabetic changes earlier and guide treatment.
- Building trust with patients and involving family members in their care can improve adherence and outcomes.

NOTES

"But I do agree as a nation, we, overall, are doing a pretty subpar job on diabetes education. How many commercials do you see about weight-loss drugs or sleep aids? But we don't see, 'See a doctor if you're diabetic,' something to start the discussion."

OLLYA FROMAL, MD



**VIDEO CASE: 28-YEAR-OLD
PATIENT WITH SEVERE
NONPROLIFERATIVE DIABETIC
RETINOPATHY.**

