

# RETINA 360 WORKBOOK



## IN FOCUS: nAMD CLINICAL PEARLS

nAMD Challenges and Patient Conversations

---

### FACULTY

---



**Barton L. Blackorby, MD**  
The Retina Institute, St. Louis  
St. Louis, MO



**Alexis Warren, MD**  
University of Chicago, Department of  
Ophthalmology and Visual Sciences  
Chicago, IL

*This activity is supported by an independent educational grant from Regeneron.*

# nAMD Challenges and Patient Conversations

Barton L. Blackorby, MD, and Alexis Warren, MD

**Watch Now:** <https://evolvemeded.com/segment/29882/>

## CASE HIGHLIGHTS

- Drs. Blackorby and Warren discuss the importance of timely diagnosis and treatment, as patients often delay seeking care due to gradual vision changes.
- They also touch on what to consider when deciding on initial treatment, such as baseline visual acuity, presence of hemorrhage, and potential for vision improvement.
- Some strategies for maintaining frequent follow-up and treatment include choosing a treat-and-extend approach, using newer longer-acting medications, counseling patients on what to expect with treatment, and involving patients in decision-making.
- Drs. Blackorby and Warren also talk about challenges with patients lost to follow-up and the importance of coordinating care with referring optometrists.

## NOTES

---

---

---

---

---

---

---

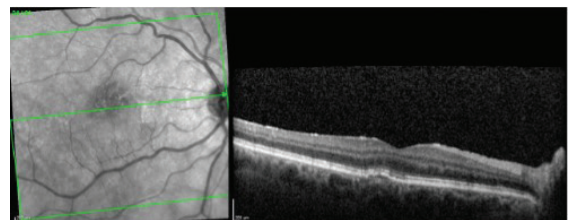
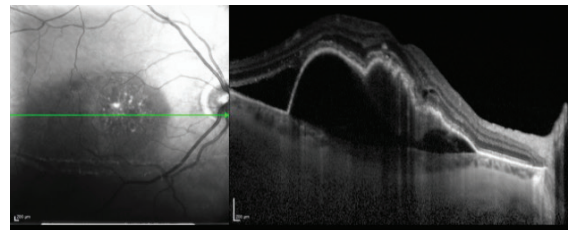
---

---

---

"And the thing that I tell patients is, 'If you wake up one day and your vision's blurry, but toward the end of the day it gets better, or day by day it fluctuates a bit, that might be something like dry eye. But if you wake up and the vision's poor, and the next day it's worse, and it's not getting better, that's something not to ignore.'"

**BARTON L. BLACKORBY, MD**



**VIDEO CASE: 72-YEAR-OLD  
PATIENT REFERRED BY  
OPTOMETRY FOR POSSIBLE  
WET AGE-RELATED  
MACULAR DEGENERATION  
CONVERSION.**

